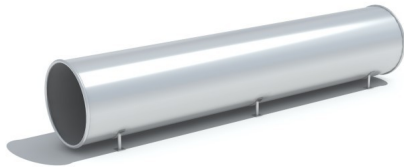


KANALO 400

Code: LL-MO-209



Physical



Crawling



Social-emotional



Socialisation

Description

A tunnel tube in the shape of a circular pipe is designed for installation inside natural or formed embankments. Length of tunnel 4,00m, diameter 0,85m. Entrance and exit cut perpendicularly to the axis of the tunnel. It's fully made of matt stainless steel.

Playground device consists of

- 1 tunnel tube

Product details

- Product dimensions (LxWxH): 4,00 x 0,85 x 0,85 m
- Safety area (LxW): 7,00 x 3,78 m
- Length between tunnel feet: L1 = 3,17 m
- Tunnel length: L2 = 4,00 m
- Safety is at the end of the tunnel: 1,5 m
- Weight: 171 kg
- Age group: 2+
- A certificate confirming compatibility with norm EN 1176
- Differences in dimensions no more than +/- 5% are acceptable

Materials

- matt stainless steel (0304), the thickness of steel plate 2mm
- foundation legs made of stainless steel

All images are for illustrative purposes only and may vary from the actual product.

