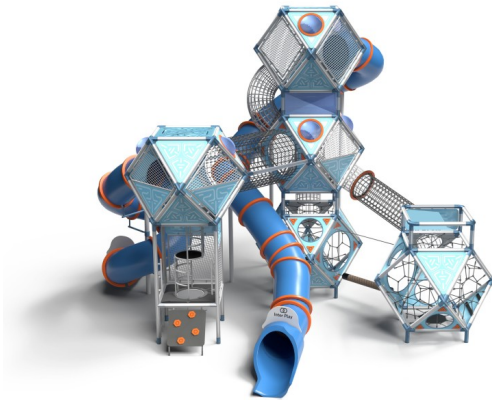


SFERO SPACE 5-1

Code: 01-SF-751-P-S



Physical



Social-emotional



Sliding down



Sitting



Swaying



Hanging



Climbing



Crawling



Socialisation



Balancing



Shelter



Getting across



Resting

Description

The **SFERO SPACE 5-1 Playset** is an exceptional playground centerpiece that captures attention from afar with its impressive size, modern design, and geometric precision. Its unique spherical structure invites children to climb, explore, and engage in endless imaginative play. Every element of the Sfero encourages movement, creativity, and discovery — ensuring hours of fun while developing coordination, strength, and spatial awareness. Built with stability and safety in mind, the Sfero Space 5-1 combines advanced engineering with striking design to create a playground structure that is both secure and visually spectacular.

The **SFERO SPACE 5-1 Playset** consists of five interconnected spherical modules and two long tube slides. Each sphere is an Archimedean solid, featuring octagonal symmetry and equilateral radial construction — providing an exceptionally stable and durable form. Each spherical module includes 24 identical edges forming steel structural tubes (Ø 88.9 mm, wall thickness 2.6 mm), hot-dip galvanized and powder-coated. The spheres are joined using an innovative internal sleeve system, ensuring strong, durable connections — maintaining full structural stability even when used by over 70 children at once.

*An optional version with stainless-steel slides is also available.

Playground device consists of

- 12 supporting posts for the main structure
- 5 slide support posts
- 2 long, curved tube slides
- 22 triangular milled panels
- 6 round porthole openings
- 2 square milled roof panels
- 1 external rectangular entrance ramp
- 4 internal triangular entrance ramps
- 5 square climbing panels
- 4 black rubber resting platforms
- 2 internal ladders
- 6 triangular steel plates with openings
- 6 square steel plates with openings
- 10 steel mesh panels
- 2 steel tunnels
- 2 rope tunnels
- 1 balancing rope
- 60 corner connectors

Product details

- Dimensions (LxWxH): 7.29 × 8.79 × 7.11 m
- Safety area (LxW): 10.46 × 12.66 m
- Maximum fall height: 2.18 m
- Age group: 4+
- Number of users: 71
- A certificate confirming compatibility with norm EN 1176
- Dimensional tolerance: ±5%

Materials

- Structure made of S235 steel, hot-dip galvanized and powder-coated. Tubes Ø 88.9 mm, wall thickness 2.6 mm.
- Ropes (Ø16 mm) reinforced with a steel core, covered with UV-resistant, flame-retardant polypropylene fibers.
- Balancing rope – polypropylene braided, reinforced with a steel core Ø10 mm.
- Modular assembly system based on repetitive components and corner connectors.
- Plastic slides with a concealed mounting system. Wall thickness of plastic slides: 8 mm.
- Mesh panels – anti-corrosive steel, powder-coated.
- Milled panels – triangular and square, made of 15 mm HDPE boards.

- Entrance ramp – steel frame covered with HPL board.
- Internal ramp steps – anti-slip HPL.
- Platforms (rests) – black rubber, reinforced.
- Portholes – 3 mm polycarbonate.
- Main frame color: RAL 7035 and RAL 5024.
- Decorative elements: light blue and orange HDPE, thickness 15 mm.
- Slides in RAL 5015 (dominant color) and RAL 2004.

All images are for illustrative purposes only and may vary from the actual product.

