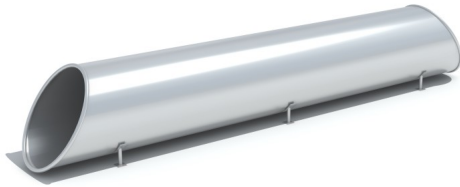


TUNELO 400

Code: LL-MO-210



Physical



Crawling



Social-emotional



Socialisation

Description

A tunnel tube in the shape of a circular pipe is designed for installation inside natural or formed embankments. Length of tunnel 4,00m, diameter 0,85m. Entrance and exit cut at 30° angle to the axis of the tunnel. It's fully made of matt stainless steel.

Playground device consists of

- 1 tunnel tube

Product details

- Product dimensions (LxWxH): 4,95 x 0,85 x 0,85 m
- Safety area (LxW): 7,90 x 3,78 m
- Length between tunnel feet: L1 = 3,57 m
- Length of the top of the tunnel: L2 = 4,00 m
- Length of the bottom of the tunnel: L3 = 4,95 m
- Weight: 190 kg
- Age group: 2+
- A certificate confirming compatibility with norm EN 1176
- Differences in dimensions no more than +/- 5% are acceptable

Materials

- matt stainless steel (0304), the thickness of steel plate 2mm
- foundation legs made of stainless steel

All images are for illustrative purposes only and may vary from the actual product.

